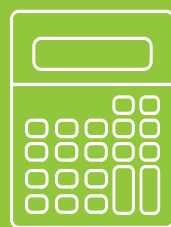


ASSESSING BENEFITS AND HARMS OF OPIOID THERAPY

Assess Benefits Of Opioid Therapy

Assess your patient's pain and function regularly. A 30% improvement in pain and function is considered clinically meaningful. Discuss patient-centered goals and improvements in function (such as returning to work and recreational activities) and **assess pain using validated instruments such as the 3-item PEG Assessment Scale:**

- 1 What number best describes your pain on average in the past week?** (from 0=no pain to 10=pain as bad as you can imagine)
- 2 What number best describes how, during the past week, pain has interfered with your enjoyment of life?** (from 0=does not interfere to 10=completely interferes)
- 3 What number best describes how, during the past week, pain has interfered with your general activity?** (from 0=does not interfere to 10=completely interferes)



If your patient does not have a 30% improvement in pain and function, consider reducing dose or tapering and discontinuing opioids. Continue opioids only as a careful decision by you and your patient when improvements in both pain and function outweigh the harms.

Assess Harms Of Opioid Therapy

Long-term opioid therapy can cause harms ranging in severity from constipation and nausea to opioid use disorder and overdose death. Certain factors can increase these risks, and **it is important to assess and follow-up regularly to reduce potential harms.**

- 1 ASSESS:** Evaluate for factors that could increase your patient's risk for harm from opioid therapy such as:
 - Personal or family history of substance use disorder
 - Anxiety or depression
 - Pregnancy
 - Age 65 or older
 - COPD or other underlying respiratory conditions
 - Renal or hepatic insufficiency
- 2 CHECK:** Consider urine drug testing for other prescription or illicit drugs and check the Oklahoma Prescription Monitoring Program (PMP) for:
 - Possible drug interactions (such as benzodiazepines)
 - High opioid dosage (≥ 50 MME/day)
 - Obtaining opioids from multiple providers
- 3 DISCUSS:** Ask your patient about concerns and determine any harms they may be experiencing such as:
 - Nausea or constipation
 - Feeling sedated or confused
 - Breathing interruptions during sleep
 - Taking or craving more opioids than prescribed or difficulty controlling use
- 4 OBSERVE:** Look for early warning signs of overdose such as:
 - Confusion
 - Sedation
 - Slurred speech
 - Abnormal gait

If harms outweigh any experienced benefits, work with your patient to reduce dose, or taper and discontinue opioids and optimize nonopioid approaches to pain management.

Tapering And Discontinuing Opioid Therapy

Symptoms of opioid withdrawal may include drug craving, anxiety, insomnia, abdominal pain, vomiting, diarrhea and tremors.

Tapering plans should be individualized. However, in general:



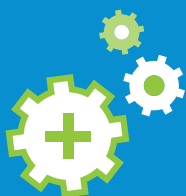
1. Go Slow

To minimize symptoms of opioid withdrawal, decrease 10% of the original dose per week. Some patients who have taken opioids for a long time might find slower tapers easier (e.g., 10% of the original dosage per month).



2. Consult

Work with appropriate specialists as needed — especially for those at risk of harm from withdrawal such as pregnant patients and those with opioid use disorder.



3. Support

During the taper, ensure patients receive psychosocial support for anxiety. If needed, work with mental health providers and offer or arrange for treatment of opioid use disorder.

Improving the way opioids are prescribed can ensure patients have access to safer, more effective chronic pain treatment while reducing the number of people who misuse, abuse, or overdose from these drugs.

Learn more: poison.health.ok.gov

This publication was supported by the Cooperative Agreement Number 5 NU17CE002745-02 funded by the Centers for Disease Control and Prevention. Its contents are solely the responsibility of the authors and do not necessarily represent the official views of the Centers for Disease Control and Prevention or the Department of Health and Human Services. The Oklahoma State Department of Health (OSDH) is an equal opportunity employer and provider. This publication, issued by the OSDH, was authorized by Terry L. Cline, PhD, Commissioner of Health, Secretary of Health and Human Services. 15,000 copies were printed by OKC Digital at a cost of \$463.49. Copies have been deposited with the Publications Clearinghouse of the Oklahoma Department of Libraries and are available for download at www.health.ok.gov. August 2017. Adapted with permission from the Centers for Disease Control and Prevention.



Injury Prevention Service
Oklahoma State
Department of Health